



# Pump Accessories

## Pump Accessories include:

Downtubes.....	100
Bearing Packers.....	101
Adapter Kit.....	101
Drum Covers.....	102
Follower Plates.....	103
Low-Level Grease Shutoff Valve.....	103
Strainers.....	104
Bung Adapters.....	104
Pump Hoists.....	105
Pump Hose Assemblies.....	107
Wall Brackets.....	107

# Pump Accessories

## Downtubes

These downtubes can be added to stub pumps in tanks and drums. These tubes are made of PVC.

Used with Pump	16-Gal. V-Cut	55-Gal. V-Cut	250-Gal. V-Cut	275-Gal. V-Cut
7222-B4	338147-10	338147-3	338147-1	338147-4
7835-C1	338147-1	338147-2	338147-3	338147-7
7880-C1	338370-1	338370-2	338370-2	338370-3
7783-C4	338147-11	338147-1	338147-1	338147-8
7793-C	338147-11	338147-1	338147-1	338147-8
8568-A4	338147-10	338147-3	338147-1	338147-4
9916-A1	338147-3	338147-4	338147-8	338147-9
9918	338147-3	338147-4	338147-8	338147-9
9918-A	338147-3	338147-4	338147-8	338147-9
9968	338147-1	338147-2	338147-3	338147-7
9970	338370-1	338370-2	338370-2	338370-3

These downtubes can be added to stub pumps in tanks and drums using low-level cutoff (321206).

Used with Pump	16-Gal. Ext.	55-Gal. Ext.	250-Gal. Ext.	275-Gal. Ext.
7222-B4	338246-10	338246-3	338246-1	338246-4
7835-C1	338246-1	338246-2	338246-3	338246-6
7880-C1	338362-3*	338362-4*	338362-4*	338362-5*
7783-C4	338246-11	338246-1	338246-1	338246-8
7793-C	338246-11	338246-1	338246-1	338246-8
8568-A4	338246-10	338246-3	338246-1	338246-4
9916-A1	338246-3	338246-4	338246-8	338246-5
9918	338246-3	338246-4	338246-8	338246-5
9918-A	338246-3	338246-4	338246-8	338246-5
9968	338246-1	338246-2	338246-3	338246-6
9970	338362-3*	338362-4*	338362-4*	338362-5*

### IMPORTANT INFORMATION

\* Includes 328207 bushing for attaching a low-level cutoff. These tubes are made of 1" wrought steel pipe.



# Pump Accessories

## Bearing Packers

These units remove old grease from race and cage of roller and ball bearings and repack them with fresh lubricant. A cover is included to keep dirt out when not in use.



### 6709-B4

Hand pump attaches to original refinery containers.



### 6598-B

Includes mounting holes for attaching it to a workbench. This model is used in conjunction with a grease gun.



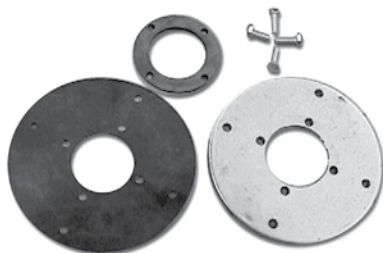
### B412

For use with grease guns. Rugged plastic construction. Used for repacking wheel bearings on cars, boat trailers and RVs

Product #	Drum Size	Bearing Size	Follower*	Drum Cover	Ship Weight
6709-A4	120 lb.	19/32" - 8"	338803	328245-4	19 lb.
6709-B4	35 lb.	19/32" - 8"	338825	337729	15 lb.
6598-B	N/A	3/4" - 6"	N/A	N/A	4 lb.
B412	N/A	3/4" - 6"	N/A	N/A	2 lb.

## Adapter Kit

Retrofitting a lube truck or other installation for a RAM pump has never been easier with Alemite's RAM pump adapter kit. This kit allows users to directly mount a RAM pump in place of a Graco Fire-ball®. Installation is easy and requires no drilling. Simply install adapter plates and mount RAM directly to the plates.



### 340380

#### INCLUDED ITEMS:

- Seals
- Plates
- Hardware

#### IMPORTANT INFORMATION

\* Flexible follower works with straight or tapered pails

# Pump Accessories

## Drum Covers



338981



338977

### FEATURES:

- Alemite Drum Covers and Bung Adapters are made of heavy-gauge steel for durability
- Drum cover flange provides rigidity and maintains solid position on drum
- Pump mounts in center of cover and three thumb screws clamp over drum rim
- For lube trucks, 324792-4 allows the pump to be side-mounted. Use tie-down kits to secure the unit to the truck platform

Product #	Drum Size	Height	Outer Diameter	Use	Use with Pumps
338166	35 lb.	2.04"	12.00"	Grease	Standard Duty/RAM
338371	120 lb.	3.19"	14.88"	Grease	Standard Duty/RAM
338163	400 lb.	1.50"	23.91"	Grease	RAM
324793-4	400 lb.	1.81"	24.00"	Grease	Industrial, H-Pumps w/ tie-down kit
323800-4	120 lb./16 gal.	1.19"	14.88"	Grease/Oil/Fluids	Industrial
323847-4	400 lb./55 gal.	3.50"	24.25"	Grease/Oil/Fluids	Industrial
338145	16 gal.	3.19"	14.88"	Oil/Fluids	RAM 9960-9968
324792-4	55 gal.	1.81"	25.63"	Oil/Fluids	Pumps w/ tie-down kits
338981	12.5 kg (276 mm)*	1.45"	10.87"	Grease	Metric Pumps
338982	20 kg (315 mm)*	1.71"	12.41"	Grease	Metric Pumps
338983	50 kg (409 mm)*	2.05"	16.09"	Grease	Metric Pumps
338984	180 kg (619 mm)*	1.57"	24.36"	Grease	Metric Pumps

### Drum Covers - Bung Mount

Product #	Drum Size	Height	Outer Diameter	Use	Bung Opening
327817-4	35 lb./5 gal.	2.38"	12.31"	Grease/Oil/Material	2" NPTF
338977	120 lb./16 gal.	3.19"	14.88"	Grease/Oil/Material	2" NPTF
318040-4	400 lb./55 gal.	1.57"	23.91"	Grease/Oil/Material	2" NPTF
322590-4	400 lb./55 gal.	3.50"	24.25"	Grease/Material	2" NPTF

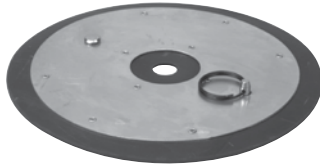
#### IMPORTANT INFORMATION

\* Indicates Drum diameter



# Pump Accessories

## Follower Plates



**337665**



**338802**



**338803**

Product #	Drum Size	Use with Pump	Tube Diameter	Outer Diameter
338801	120 lb.	9950 Series	1-1/8"	14.14"
338802	120 lb.	Standard Duty/RAM	1-3/8"	14.14"
338803	120 lb.	Manual	1-5/8"	14.14"
338804	120 lb.	Industrial	2"	14.14"
338911	400 lb. (180 kg)	Standard Duty/RAM	1-3/8"	23.53"
338912	400 lb.	Industrial	2"	23.53"
338923	400 lb.	7539-4 (Manual)	1-5/8"	23.53"
337665	35 lb.	9911 Series (RAM)	1-1/8"	11.27"
338825	35 lb.	7537-4, 6709-B4 (Manual)	1-5/8"	11.27"
338991	12.5 kg (270 mm)	Metric RAM, H & Super H	29 mm	10.63"
338992	20 kg (330 mm)	Metric RAM, H & Super H	29 mm	12.99"
338993	50 kg (390 mm)	Metric RAM, H & Super H	35 mm	15.35"
338911	180 kg (597 mm)	Metric RAM, H & Super H	35 mm	15.35"
314898	30 lb.	6713-4 (Manual)	7/8"	8.44"
340319	35 lb.	8602-A	2-1/8"	14.14"
340372	120 lb.	8602-B	2-1/8"	11.27"

103

## Low-Level Grease Shutoff Valve



### 340070

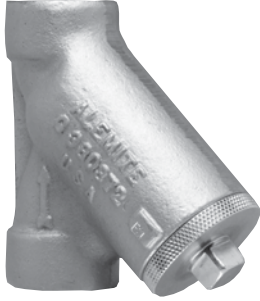
Low-Level Grease Shutoff Valve

#### FEATURES:

- Prevents costly damage to fluid handling pump systems due to runaway situations
- Reduces unplanned downtime
- Ideal for industrial and garage applications
- High-flow design makes it ideal for almost any size pneumatic pump that incorporates a flexible follower plate
- A universal design allows it to easily be installed on pump systems in many different settings

# Pump Accessories

## Strainers



**380372-B1**

### Lubricant Strainers

Product #	Description	Inlet NPTF(f)	Outlet NPTF(f)	Element Product #	Element Porosity
380372-B1	Grease/Y Type	1/2"	1/2"	328628	138 micron
380372-A1	Oil/Y Type	1/2"	1/2"	384847	40 micron
339683	Waste Oil/Y Type	1"	1"	N/A	16 mesh

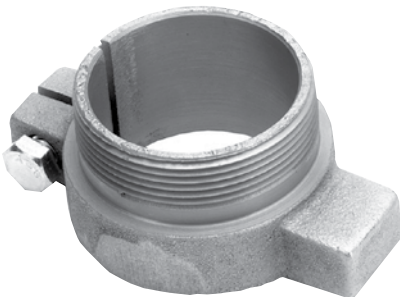


**326463-B1**

### Pump Tube Strainers

Product #	Use with Pump
326432	Heavy Duty
326463-A1	Old Style Single-Acting 9911/9950
326463-B1	9911/9950 Series, Standard Duty, 9979, 9940 Series

## Bung Adapters



**326750-B1**

### FEATURES AND BENEFITS:

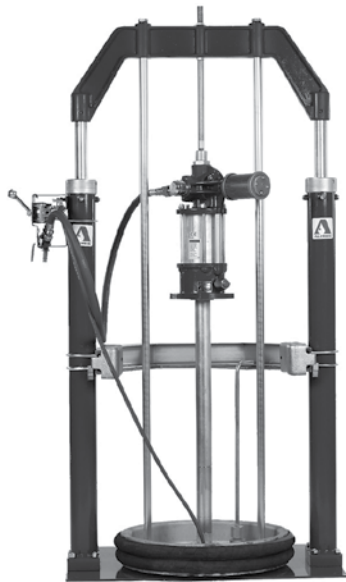
- 2" NPTF male to fit standard container openings
- Constructed of cast iron

Product #	Tube Size	Use with Pump
326750	1-3/8"	RAM & Standard Duty
326750-B1	2"	Industrial/Material
326750-C1	1-1/2"	7216-B
326750-E1	1-5/8"	7537 Series



# Pump Accessories

## Pump Hoists



**7818-F5**

### **7818-F5**

#### Bridge Hoist

##### SPECIFICATIONS:

- Dimensions: 69-1/4" H (lowered) x 42-1/2" W x 27-3/16" D; 107" H (raised)
- Air inlet: 3/4" NPTF(f)
- Pressure: 200 psi maximum

##### FEATURES:

- Air operated, twin cylinder bridge hoist
- Controlled RAM pressure and equipment weight
- Integral control panel controls air applied to pump (on-off controls), to vacuum-break hose assemblies (on-off controls) and to hoist cylinders
- Three position (up-down-neutral) hoist air control
- Hoist base plate bolts to floor

##### INCLUDED ITEMS:

- Guide Rods
- Drum Retaining Mechanisms and Vacuum-Break
- Pump Air Hose Assemblies and Follower (327690)

105



**2741-4**

### **2741-4**

#### Single-Post Pump Hoist

##### SPECIFICATIONS:

- Height: 62-1/8" (lowered); 98-5/8" (raised)
- Air inlet: 1/4" NPTF(f)
- Pressure: 150 psi maximum

##### FEATURES:

- Accepts both bung and base mounted pumps
- Hoist and cover swing full 360°
- Cover automatically positions pump over center of drum during down travel and seals material from contamination
- Push/pull valve controls air to hoist

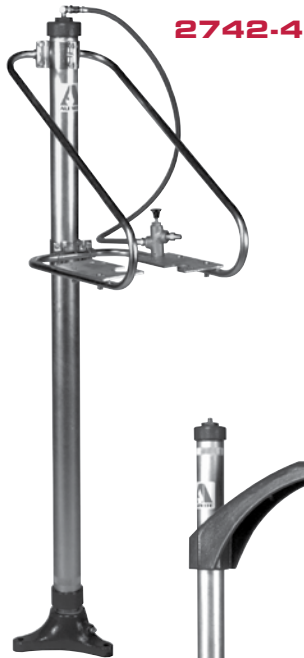
##### RECOMMENDED ACCESSORIES:

- Adapter Plate (322593): adapts cover assembly to bung mounted pumps

# Pump Accessories

## Pump Hoists

106

**2742-4**

### 2742-4

#### Single-Post Pump Hoist

##### SPECIFICATIONS:

- Height: 62-1/8" (lowered); 98-5/8" (raised)
- Air inlet: 1/4" NPTF(f)
- Pressure: 150 psi maximum

##### FEATURES:

- Air operated hoist for bung or base mounted pumps
- Base mounts to floor and hoist swings full 360°
- Hoist is raised with air pressure and lowered with equipment weight

##### RECOMMENDED ACCESSORIES:

- Vacuum-Break Hose Assembly may be attached to push/pull air valve that controls operation of hoist
- Follower Plate (324610) for Class III, IV and V materials (35 lb.)
- Follower Plate (327242) for Class III, IV and V materials (400 lb.)
- Adapter Kit (see pump)

**2743-4**

### 2743-4

#### Single-Post Pump Hoist

##### SPECIFICATIONS:

- Height: 62-1/8" (lowered); 98-5/8" (raised)
- Base: 11-1/2"
- Air inlet: 1/4" NPTF(f)
- Pressure: 150 psi maximum

##### FEATURES:

- Compatible with 7700 Series Pumps
- Air-operated hoist lifts and lowers pumps for fast and easy drum changes
- Hoist arm adjusts for different pump heights, swings a full 360° and can serve one or more pumps
- Push/pull air valve controls hoist

##### INCLUDED ITEMS:

- Hoist (322550-A4)
- Arm Assembly (324613)

**324880-B4**

### 324880-B4

#### Single-Post Pump Hoist

##### SPECIFICATIONS:

- Height: 42-1/2" (lowered); 69" (raised)

##### FEATURES:

- For use with models 8550-A1, 9950-A1 and 8540-A1 pump and cover assemblies
- Hoist has cast iron base that anchors to the floor



# Pump Accessories

## Pump Hose Assemblies

### Hose Assemblies for Manual Pumps

(Manual grease pump, foot-operated pump, high-volume bucket pump and multi-pressure bucket pump).  
Hose construction is single wire braid.

Product #	Coupling Thread Size	Hose ID	Max. Work Pressure	Hose Length
317853-5	1/8" NPTF(m) x 3/8" NPTF(m)	1/4"	4,400 psi	5'
317854-5F	3/8" NPTF(m) x 3/8" NPTF(f)	3/8"	3,200 psi	5-1/2'
317854-10	3/8" NPTF(m) x 3/8" NPTF(f)	3/8"	3,200 psi	10'
317854***	3/8" NPTF(f)	3/8"	3,200 psi	5-1/2', 10'
317875***	1/2"-27NS(f)	1/4"	8,000 psi	5-1/2', 7', 10', 14', 20', 25', 30', 40', 50', 70'

### Hose Assemblies for Manual Pumps

Use with all manual pumps, including high-pressure manual bucket pumps except 6713-4.

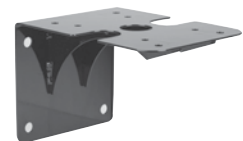
Product #	Use	Coupler	Hose	Hose Length	Swivel	Check Valve	Adapter
6615-G	Giant Button Head Fittings	304300	317854-5F	5-1/2'	51219	46405	N/A
6616-G	Standard Button Head Fittings	42030	317854-5F	5-1/2'	51219	46405	N/A
6617-G	Hydraulic Fittings	6304-C	317854-5F	5-1/2'	N/A	N/A	52940
6617-K	Hydraulic Fittings	6304-C	317854-10	10'	N/A	N/A	52940
322434	Hydraulic Fittings	308730-A	317853-5	5'	N/A	N/A	52940

## Wall Brackets

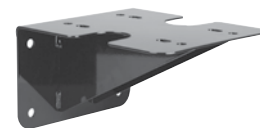
Product #	Use with Pump
325749*	9916-A1, 9918-A, 9968, 9970, 8568-A4
328190-B4**	7783 series, 7793 series
340195	8203, 8205, 8206, 8207
340196	8202
340447-I	8202-A
340448-I	8202



325749



340196



340195

## Split Manifolds

Product #	Use with Pump	Pump
340197	Mixing Manifold	For 1/2" pump 8202
340198	Mixing Manifold	For 1" pump 8203

### IMPORTANT INFORMATION

- \*Has a 2" NPTF Bung Mount
- \*\* Order Adapter Plate (322593) to mount pumps that have Bung Adapter
- \*\*\* Add "-#" to obtain product number. For example, 317875-10 indicates a 10-foot hose